

# Education Programs



Audubon

Grange Insurance  
Audubon Center

## Elementary Field Trips Programs

These two-hour field trip programs are designed for elementary aged students.



### All About Birds

Do all birds migrate? Do they all have feathers? Are they really related to dinosaurs? Discover the world of birds and their unique adaptations during this program. Students will get familiar with a few common Ohio birds, go on a bird walk throughout the park, and see if their flock can survive during the Migration Game. Off-site options available.

### Habitat Explorers

What is a habitat? Are all habitats the same? Students will explore river, forest, prairie, and wetland habitats in the park and discover what makes them distinct. Search for different plants and animals in each. Season permitting, this program includes wetland pond netting for macroinvertebrates and other aquatic life.



### Changes in Nature

How do living things have an impact on their environment? What is the difference between native, non-native, and invasive species? Students will learn about the history of the Whittier Peninsula, and go on a scavenger hunt to find native and invasive species throughout the park. This program can include invasive species removal depending on the season and age of participants.

## Scheduling and Pricing:

- Elementary field trip programs are a base rate of \$200 for up to 25 participants.
- Participants beyond 25 are \$10 per person (including adults).
- For groups larger than 30, we will need to reserve our MPR room which may have more limited availability.
- Please send all program inquiries to [giacfieldtrips@gmail.com](mailto:giacfieldtrips@gmail.com)
- In your email inquiry please include:
  - three date options
  - age range of participants
  - anticipated attendance
  - choice of theme
- A deposit of half the total amount is required to secure booking.
- Program inquiries are checked once a week.

# Education Programs



Grange Insurance  
Audubon Center

## Adult Education Programs

These programs for adults are offered both on and off site.

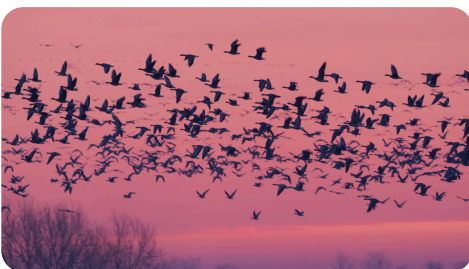
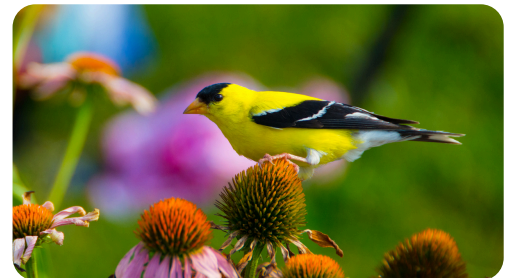


### Group Bird Hike

Suitable for both beginners and avid birders alike. Learn about the history of the National Audubon Society, GIAC, and the Important Bird Area (IBA) surrounding our Center. Receive a binocular lesson then embark on a birding adventure. Conclude by entering data collected of birds spotted into the eBird database. Fee: \$100. Length: 1-Hour.

### Native Plants for Birds

Learn about the benefits of native plants and their importance for the balance of local ecosystems. Discover how to use native plants in your own yard to attract birds and restore native habitat. Participants will get familiar with some of Ohio's native plants and learn how to use Audubon's Native Plant Database. Take a walk through the park and discover the native, non-native, and invasives growing nearby. Fee: \$200. Length: 2-Hours.



### Bird Migration and Community Science

Learn about bird migration, migratory birds, flyways, and how you can get involved with community science. Participants will discover how to use Audubon's Migratory Bird Explorer tool, the how's and why's of bird migration, and get familiar with a few examples of seasonal birds found in Ohio. Concludes with a guided bird hike and data entry of birds spotted into the eBird database. Fee: \$200. Length: 2-Hours.

### Scheduling and Pricing:

- Adult programs (excluding basic bird hike) are a base rate rate of \$200 for up to 25 participants.
- Participants beyond 25 are \$10 per person.
- For on-site groups larger than 30, we will need to reserve our MPR room which may have more limited availability.
- Please send all program inquiries to [giacfieldtrips@gmail.com](mailto:giacfieldtrips@gmail.com)
- In your email inquiry please include:
  - three date options
  - anticipated attendance
  - choice of theme
- A deposit of half the total amount is required to secure booking.
- Program inquiries are checked once a week.

# Education Programs



Grange Insurance  
Audubon Center

## Guided Nature Experiences

These 2-hour educational programs for young adults are designed to be informal and social.



### Hello Birds

Discover the world of birds through small group exploration of the Important Bird Area (IBA) throughout the park. Learn how to use the Merlin app to identifying bird species by sight and sound. Discuss with peers how your observations connect to the world at large and climate change.

### Community Science

Learn how to use apps such as Merlin, eBird, iNaturalist, and Seek to identify flora and fauna in the park. Discover how data collected through these apps contributes to community science. Conclude with a group discussion about your findings and how to take local actions on climate change.



### Visualizing Our Climate Future

Explore Taylor Moon's art exhibition "Artificial Modernity" with modernized digital illustrations of birds in today's world inspired by John James Audubon's originals. Create your own artwork inspired by the days discoveries and discussions.

### Scheduling and Pricing:

- Adult programs are a base rate rate of \$200 for up to 25 participants.
- Participants beyond 25 are \$10 per person.
- For on-site groups larger than 30, we will need to reserve our MPR room which may have more limited availability.
- Please send all program inquiries to [giacfieldtrips@gmail.com](mailto:giacfieldtrips@gmail.com)
- In your email inquiry please include:
  - three date options
  - anticipated attendance
  - choice of theme
- A deposit of half the total amount is required to secure booking.
- Program inquiries are checked once a week.